





PORT VELL

Vanessa Pellisa for Barcelona Knits Festival



INFO

MEASUREMENTS

Size 1 is for a regular-sized cowl.

Size 2 can be wrapped around your neck twice.

Finished circumference: approx. 50 (115) cm / 20 (46)".

Height: approx. 32.5 (32.5) cm / 13 (13)".

YARN AND YARDAGE

Approx 290 (710) m of fingering-weight yarn or 320 (760) m of sport-weight yarn.

Sample is knit in Nadir by Lalanalu in colorway 'Crudo' (100% Merino Wool, 100 grams, 380 meters).

NEEDLES

— 3.25 mm circular needle (or needle size to obtain gauge).

— if working the purl welt, 3 mm circular needle (or a size below gauge size needle).

Swatch to find the right needle size for your own tension and

yarn choice.

GAUGE

30 sts x 40 rounds = 10 x 10 cm / 4 x 4" in stockinette stitch on larger needle after blocking.

Gauge is not crucial for this project but it will affect yardage and the finished measurements.

NOTIONS

Blocking tools, scissors, tapestry needle, stitch markers and tape measure. A row counter might come in handy.

Optional: a second set of gauge-size or below-gauge-size needles to work the welts and tubular cast on.

Optional: scrap yarn (for the tubular cast on).

SUPPORT

For support, questions and love letters, you can reach out at vanessa@vanessapellisa.com.

VANESSA
Pellisa

Barcelona
Knits

ABBREVIATIONS

BO
Bind off

BOR
Beginning of round

CO
Cast on

k
Knit

k2tog
Knit 2 stitches together (1 stitch decreased)

M
marker

p
Purl

pm
Place marker

rep
Repeat

RS
Right side

SL1
slip 1 stitch purlwise

sm
Slip marker

SSK
slip, slip, knit (1 stitch decreased)

st(s)
Stitch(es)

WS
Wrong side


Port Vell is a seamless snugly cowl worked bottom up in the round. It combines three panels of textured motifs framed by ‘welts’ (or ‘tucks’) and 2x2 ribbing edges. The cowl comes in two sizes. The textured panels are inspired by the timeless knit and purl motives of gansey sweaters, which I adore! Also, it is super fun to knit!

Instructions

SET-UP


To cast on, choose between a super-fancy tubular CO or an easier (and faster!) long-tail CO.


OPTION 1: LONG-TAIL CAST-ON

 Video support: Long-tail cast-on <https://www.vanessapellisa.com/portvell>

With gauge-sized needles (for my sample, I used 3.25 mm / US 3 needles), and the long-tail cast-on, CO 144 (336) sts. Place a m to indicate BOR and join to work in the round.

OPTION 2: TUBULAR CAST-ON

 Video support: Backwards loop cast on <https://www.vanessapellisa.com/portvell>

 Video support: Tubular 2x2 cast on <https://www.vanessapellisa.com/portvell>

With gauge-sized needles (for my sample, I used 3.25 mm / US 3 needles), some waste yarn and the backwards loop cast-on or crochet cast-on, CO 72 (168) sts. Do not join to work in the round. Work a tight cast-on to avoid a sloppy edge. Break waste yarn. Join main yarn.

SET-UP ROW 1 (RS): Knit to end.

SET-UP ROW 2 (WS): Purl to end.

SET-UP ROW 3 (RS): Knit to end.

SET-UP ROW 4 (WS): Purl to end.

Remove the waste yarn of the provisional cast-on and place the live sts on another pair of needles (gauge or below-gauge size will work fine). There are 144 (336) sts on the needles, 72 (168) on each set. Now, fold the work with the right (knit) side facing you. Hold both needles parallel, and begin to work as follows.

SET-UP ROW 5: *(K2 on the front needle, P2, on the back needle). Repeat from * to end. Place a m to indicate BOR and join to work in the round.

RIBBING

Work as follows.

ROUND 1: *(K2, P2). Repeat from * to end

Repeat round 1 seven more times.

SECTION 1: GANSEY SQUARES

Chart is read from bottom up and from right to left.

WRITTEN INSTRUCTIONS

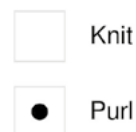
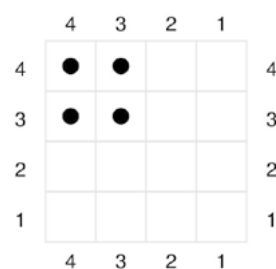
ROUND 1: Knit to end.

ROUND 2: Repeat round 1.

ROUND 3: *(K2, P2). Repeat from * to end.

ROUND 4: Repeat round 3.

Work Rounds 1-4 seven more times (32 rounds in total)




SECTION 2: WELTS

Tip! Why not knit the welts in a contrasting color?

Choose between classic tucked welts (as shown in the pictures) or an easier purl stitch welt.

OPTION 1: WELTS

 Video support: Welts <https://www.vanessapellisa.com/portvell>

SET-UP ROUND: Knit to end. This is your pick up round.

Tip! You can use a lifeline in a contrast sewing thread to mark the set-up round.

Knit 7 rounds.

Now, with the tip of the right hand needle, lift (pick up) the first stitch of the pick up round on the WS of your work, place it on the left-hand needle and K2tog the first stitch on the picked up round and the first live st on the left-hand needle. Repeat until you have worked all of the sts in the round.

Then, knit one round. Then, work a new set-up round, and repeat instructions to create a second tuck.

OPTION 2: PURL STITCH WELT

Knit 1 round. Change to below-gauge needle size (0.5 mm less than gauge size).

Purl 3 rounds.

Knit 2 rounds.

Purl 3 rounds.

Change to gauge size needle. Knit 1 round.

SECTION 3: GANSEY FLAGS

WRITTEN INSTRUCTIONS

ROUND 1: *(K7, P1). Repeat from * to end.

ROUND 2: *(K6, P2). Repeat from * to end.

ROUND 3: *(K5, P3). Repeat from * to end.

ROUND 4: *(K4, P4). Repeat from * to end.

ROUND 5: *(K3, P5). Repeat from * to end.

ROUND 6: *(K2, P6). Repeat from * to end.

ROUND 7: *(K1, P7). Repeat from * to end.

ROUND 8: *(P1, K7). Repeat from * to end.

ROUND 9: *(P2, K6). Repeat from * to end.

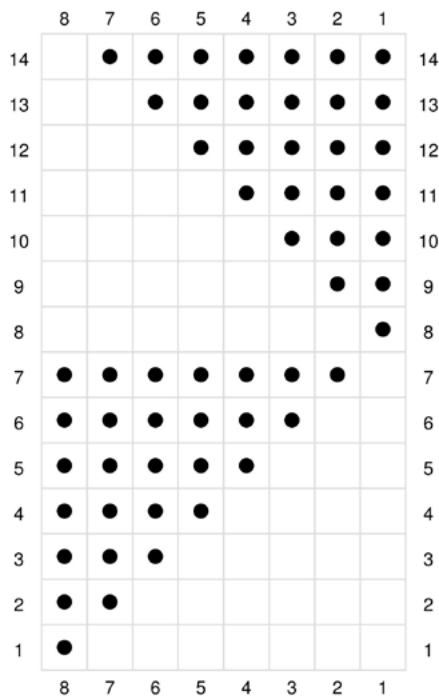
ROUND 10: *(P3, K5). Repeat from * to end.

ROUND 11: *(P4, K4). Repeat from * to end.

ROUND 12: *(P5, K3). Repeat from * to end.

ROUND 13: *(P6, K2). Repeat from * to end.

ROUND 14: *(P7, K1). Repeat from * to end.



Work Rounds 1-14 once more. Then work rounds 1 to 7 once more. (35 rounds in total)

SECTION 4: WELTS

Repeat section 2 WELTS.

SECTION 5: GANSEY CHEVRON

WRITTEN INSTRUCTIONS

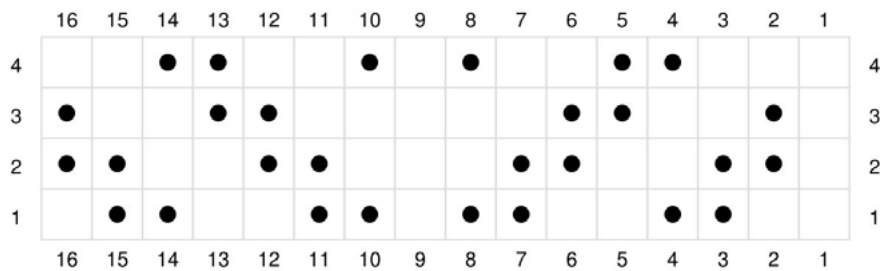
ROUND 1: *(K2, P2, K2, P2, K1, P2, K2, P2, K1). Repeat from * to end.

ROUND 2: *(K1, P2, K2, P2, K3, P2, K2, P2). Repeat from * to end.

ROUND 3: *(K1, P1, K2, P2, K5, P2, K2, P1). Repeat from * to end.

ROUND 4: *(K3, P2, K2, P1, K1, P1, K2, P2, K2). Repeat from * to end.

Work Rounds 1-4 seven more times. (*32 rounds in total*).



NEXT ROUND: Knit to end.

RIBBING

Then, work as follows.

ROUND 1: *(K2, P2). Repeat from * to end.

Repeat round 1 seven more times.

BIND OFF

To bind off, choose between a super-fancy tubular BO or bind off loosely in ribbing.

OPTION 1: BIND OFF IN PATTERN

Bind off the sts in pattern loosely.

OPTION 2: TUBULAR BIND-OFF

 Video support: sewn bind off <https://www.vanessapellisa.com/portvell>

We will now transform our 2x2 ribbing into 1x1 ribbing. Work as follows:

NEXT ROUND: *(K1, sl1 st to cable needle and hold at front, slip next stitch (which is a purl stitch) to the right-hand needle with yarn in front and without knitting it, K1 from cable needle, slip next stitch purlwise with yarn in front). Repeat from * to end of round.

Please, note you can either knit the held stitch straight from the cable needle or else slip it into your left-hand needle and knit it as usual.

NEXT ROUND: *(sl1 st with yarn held in back, P1). Repeat from * to end of round.

Now, work a sewn bind-off as follows.

Cut yarn so that the tail is at least 4 times as long as the length of the hem.

Using a tapestry needle, thread the yarn through and work your sewn bind-off set-up by inserting the tapestry needle into the first stitch on the left-hand needle purlwise. Leave the stitch on the needle. Now, pass the tapestry needle between the first and the second stitch from the back of the work to the front. Now, insert the tapestry needle knitwise into the second stitch and pass the thread through to the back of the work.

The set-up is done! Let's now work the four steps of the ribbed sewn bind-off.

STEP 1: Insert the tapestry needle into the first (knit) stitch (knitwise) and drop it from the knitting needle.

STEP 2: Insert the tapestry needle into the second stitch (purlwise).

STEP 3: Insert the tapestry needle into the first (purl) stitch (purlwise) and drop it from the knitting needle.

STEP 4: pass the tapestry needle between the first and second sts from the back of the work to the front. Insert the tapestry needle (knitwise) into the second stitch and pull the yarn through to the back of the work.

Repeat steps 1-4 until you have worked all the sts on the needles. Then, repeat steps 1 and 3.

FINISHING

Gently soak and block. Weave in all remaining ends. Congratulations on finishing your beautiful hand-made cowl!

THANK YOU!

Thank you so much for getting a copy of this pattern. I hope that you will enjoy knitting it. My designs are created from the heart and I hope you will get plenty of wear out of the garments that you create with them.

If you are on Instagram, you can share your project using the hashtag #PortVellCowl and tagging me @vanessapellisa, so I can find you!

I also write a free monthly newsletter, where I share bits and pieces of my work and offer special discounts to my subscribers. Please, consider joining my mailing list! Please, *consider joining my mailing list!*

YOU MIGHT ALSO LIKE



Kume Sweater



Micaela Shawl



Ovejita Bonnet +
Maltese Sweater



Boqueria Basket